



Certificate of Analysis

CANNABUSINESS LABORATORIES, LLC

Customer:

Hemp Thyself
175 Eastern Parkway
Brooklyn, NY 11238

Sample ID **221205024**
Order Number **CB221205012**
Sample Name **Pain Salve11**

Received Date **12/5/2022**
COA Released **12/6/2022**

External Sample ID

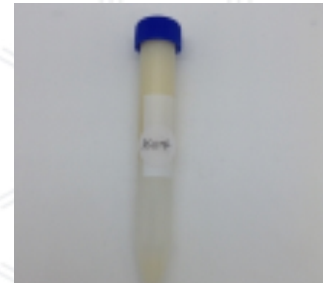
Batch Number **PS11722-2**
Product Type **Topical**
Sample Type **Topical**

Comments

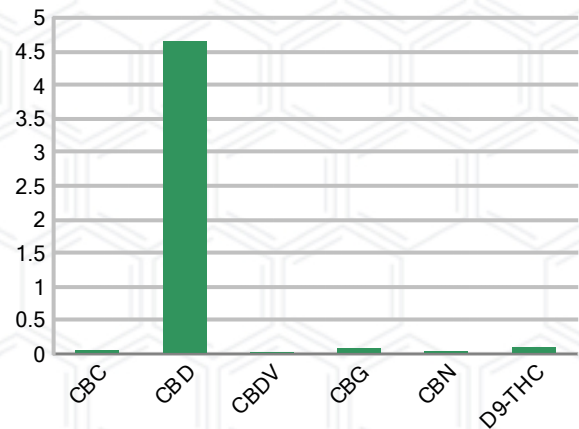
CANNABINOID PROFILE (Product Size = 60 g)

Analyte	LOQ (%)	% Weight	mg/g	mg/unit
CBC	0.01	0.050	0.504	30.24
CBD	0.01	4.655	46.55	2793.00
CBDa	0.01	ND	ND	ND
CBDV	0.01	0.018	0.180	10.80
CBG	0.01	0.086	0.860	51.60
CBGa	0.01	ND	ND	ND
CBN	0.01	0.040	0.400	24.00
d8-THC	0.01	ND	ND	ND
d9-THC	0.01	0.090	0.900	54.00
THCa	0.01	ND	ND	ND
Total Cannabinoids		4.939	49.39	2963.00
Total Potential THC		0.090	0.900	54.00
Total Potential CBD		4.655	46.55	2793.00
Total Potential CBG		0.086	0.860	51.60
Ratio of Total Potential CBD to Total Potential THC			51.72 : 1	
Ratio of Total Potential CBG to Total Potential THC			0.96 : 1	

SAMPLE IMAGE



CANNABINOIDS % Weight



*Total Cannabinoids refers to the sum of all cannabinoids detected.

*Total Potential CBD = (0.877 x CBDa) + CBD. *Total Potential THC = (0.877 x THCa) + THC. *Total Potential CBG = (0.877 x CBGa) + CBG.

*Total Potential THC/CBD are calculated to take into account the loss of an acid group during decarboxylation.



J. Hobgood
Laboratory Manager

SIGNATURE

Jamie Hobgood

LABORATORY MANAGER

12/06/2022 1:19 PM

DATE

This product has been tested by CannaBusiness Laboratories using validated testing methodologies and a quality system. Values reported relate only to the product tested. CannaBusiness Laboratories makes no claims as to the efficacy, safety, or other risks associated with any detected or non-detected levels of any compounds reported herein. This Certificate shall not be reproduced except in full, without the written permission of CannaBusiness Laboratories. Photo is of sample received by the lab and may vary from final packaging. The results apply to the sample as received.

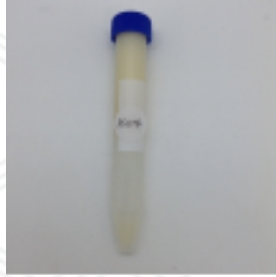


Certificate of Analysis

CANNABUSINESS LABORATORIES, LLC

Customer

Hemp Thyself
175 Eastern Parkway
Brooklyn, NY 11238



Overall Batch Results	
Pesticide	Moisture Content
Potency	Water Activity
Mycotoxins	Heavy Metals
Microbial Screen	Residual Solvents
Terpenoids	

Sample Name: Pain Salve11
Sample ID: 221205024
Order Number: CB221205012
Product Type: Topical
Sample Type: Topical
Received Date: 12/05/2022
Batch Number: PS11722-2
COA released: 12/06/2022 1:19 PM

Potency (mg/g)

Date Tested: 11/18/2022

Method: CB-SOP-028

Instrument:

0.090 % Total THC	4.655 % Total CBD	4.939 % Total Cannabinoids	49.39 mg/g Total Cannabinoids
-----------------------------	-----------------------------	--------------------------------------	---

Analyte	Result	Units	LOQ	Result	Units
CBC (Cannabichromene)	0.050	%	0.010	0.504	mg/g
CBD (Cannabidiol)	4.655	%	0.010	46.55	mg/g
CBDa (Cannabidiolic Acid)	ND	%	0.010	ND	mg/g
CBDV (Cannabidivarin)	0.018	%	0.010	0.180	mg/g
CBG (Cannabigerol)	0.086	%	0.010	0.860	mg/g
CBGa (Cannabigerolic Acid)	ND	%	0.010	ND	mg/g
CBN (Cannabinol)	0.040	%	0.010	0.400	mg/g
D8-THC (D8-Tetrahydrocannabinol)	ND	%	0.010	ND	mg/g
D9-THC (D9-Tetrahydrocannabinol)	0.090	%	0.010	0.900	mg/g
THCa (Tetrahydrocannabinolic Acid)	ND	%	0.010	ND	mg/g



J. Hobgood
Laboratory Manager

Jamie Hobgood

12/06/2022 1:19 PM

SIGNATURE

DATE

NT = Not tested, ND = Not detected; LOQ = Limit of Quantitation; <LOQ = Detected; >ULOL = Above upper limit of linearity; CFU/g = Colony forming units per 1 gram; TNTC = Too numerous to count

This product has been tested by CannaBusiness Laboratories using validated testing methodologies and a quality system. Values reported relate only to the product tested. CannaBusiness Laboratories makes no claims as to the efficacy, safety, or other risks associated with any detected or non-detected levels of any compounds reported herein. This Certificate shall not be reproduced except in full, without the written permission of CannaBusiness Laboratories. Photo is of sample received by the lab and may vary from final packaging. The results apply to the sample as received.