



# Certificate of Analysis

## CANNABUSINESS LABORATORIES, LLC

### Customer:

Hemp Thyself  
175 Eastern Parkway  
Brooklyn, NY 11238

Sample ID **221205027**  
Order Number **CB221205012**  
Sample Name **2500mg tincture-2**

Received Date **12/5/2022**  
COA Released **12/6/2022**

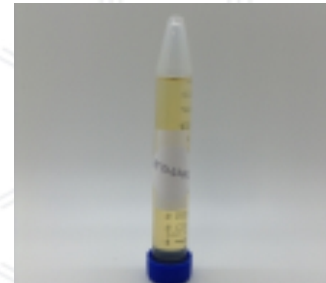
External Sample ID  
  
Batch Number **25TC63022**  
Product Type **Edible**  
Sample Type **Edible**

Comments

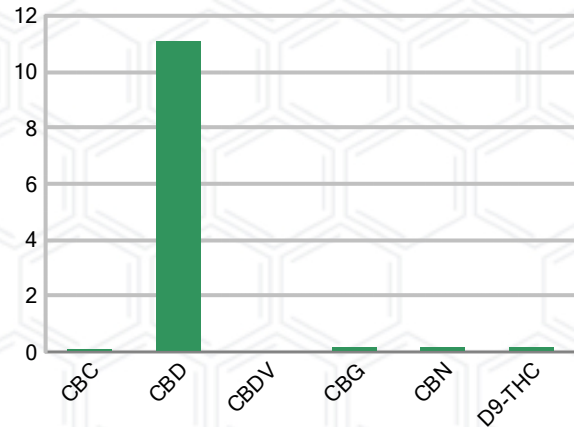
### CANNABINOID PROFILE (Product Size = 30 mL)

Analyte	LOQ (%)	% Weight	mg/mL	mL/serving
CBC	0.01	0.100	0.932	27.96
CBD	0.01	11.07	102.9	3087.00
CBDa	0.01	ND	ND	ND
CBDV	0.01	0.033	0.310	9.30
CBG	0.01	0.171	1.588	47.64
CBGa	0.01	ND	ND	ND
CBN	0.01	0.173	1.605	48.15
d8-THC	0.01	ND	ND	ND
d9-THC	0.01	0.142	1.325	39.75
THCa	0.01	ND	ND	ND
<b>Total Cannabinoids</b>		<b>11.69</b>	<b>108.7</b>	<b>3261.00</b>
<b>Total Potential THC</b>		<b>0.142</b>	<b>1.325</b>	<b>39.75</b>
<b>Total Potential CBD</b>		<b>11.07</b>	<b>102.9</b>	<b>3087.00</b>
<b>Total Potential CBG</b>		<b>0.171</b>	<b>1.588</b>	<b>47.64</b>
<b>Ratio of Total Potential CBD to Total Potential THC</b>				<b>77.96 : 1</b>
<b>Ratio of Total Potential CBG to Total Potential THC</b>				<b>1.20 : 1</b>

### SAMPLE IMAGE



### CANNABINOIDS % Weight



\*Total Cannabinoids refers to the sum of all cannabinoids detected.

\*Total Potential CBD = (0.877 x CBDa) + CBD. \*Total Potential THC = (0.877 x THCa) + THC. \*Total Potential CBG = (0.877 x CBGa) + CBG.

\*Total Potential THC/CBD are calculated to take into account the loss of an acid group during decarboxylation.



*J. Hobgood*  
Laboratory Manager

SIGNATURE

Jamie Hobgood

LABORATORY MANAGER

12/06/2022 1:20 PM

DATE

This product has been tested by CannaBusiness Laboratories using validated testing methodologies and a quality system. Values reported relate only to the product tested. CannaBusiness Laboratories makes no claims as to the efficacy, safety, or other risks associated with any detected or non-detected levels of any compounds reported herein. This Certificate shall not be reproduced except in full, without the written permission of CannaBusiness Laboratories. Photo is of sample received by the lab and may vary from final packaging. The results apply to the sample as received.

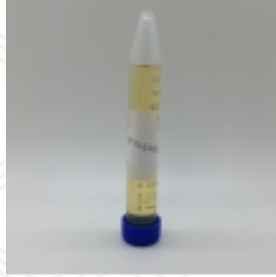


# Certificate of Analysis

## CANNABUSINESS LABORATORIES, LLC

### Customer

Hemp Thyself  
175 Eastern Parkway  
Brooklyn, NY 11238



Overall Batch Results	
Pesticide	Moisture Content
Potency	Water Activity
Mycotoxins	Heavy Metals
Microbial Screen	Residual Solvents
Terpenoids	

**Sample Name:** 2500mg tincture-2

**Sample ID:** 221205027

**Order Number:** CB221205012

**Product Type:** Edible

**Sample Type:** Edible

**Received Date:** 12/05/2022

**Batch Number:** 25TC63022

**COA released:** 12/06/2022 1:20 PM

### Potency (mg/mL)

Date Tested: 07/25/2022

Method: CB-SOP-028

Instrument:

<b>0.142 %</b> Total THC	<b>11.07 %</b> Total CBD	<b>11.69 %</b> Total Cannabinoids	<b>108.7 mg/mL</b> Total Cannabinoids
-----------------------------	-----------------------------	--------------------------------------	--

Analyte	Result	Units	LOQ	Result	Units
CBC (Cannabichromene)	0.100	%	0.010	0.932	mg/mL
CBD (Cannabidiol)	11.07	%	0.010	102.9	mg/mL
CBDa (Cannabidiolic Acid)	ND	%	0.010	ND	mg/mL
CBDV (Cannabidivarin)	0.033	%	0.010	0.310	mg/mL
CBG (Cannabigerol)	0.171	%	0.010	1.588	mg/mL
CBGa (Cannabigerolic Acid)	ND	%	0.010	ND	mg/mL
CBN (Cannabinol)	0.173	%	0.010	1.605	mg/mL
D8-THC (D8-Tetrahydrocannabinol)	ND	%	0.010	ND	mg/mL
D9-THC (D9-Tetrahydrocannabinol)	0.142	%	0.010	1.325	mg/mL
THCa (Tetrahydrocannabinolic Acid)	ND	%	0.010	ND	mg/mL



*J.Hobgood*  
Laboratory Manager

Jamie Hobgood

12/06/2022 1:20 PM

SIGNATURE

DATE

NT = Not tested, ND = Not detected; LOQ = Limit of Quantitation; <LOQ = Detected; >ULOL = Above upper limit of linearity; CFU/g = Colony forming units per 1 gram; TNTC = Too numerous to count

This product has been tested by CannaBusiness Laboratories using validated testing methodologies and a quality system. Values reported relate only to the product tested. CannaBusiness Laboratories makes no claims as to the efficacy, safety, or other risks associated with any detected or non-detected levels of any compounds reported herein. This Certificate shall not be reproduced except in full, without the written permission of CannaBusiness Laboratories. Photo is of sample received by the lab and may vary from final packaging. The results apply to the sample as received.